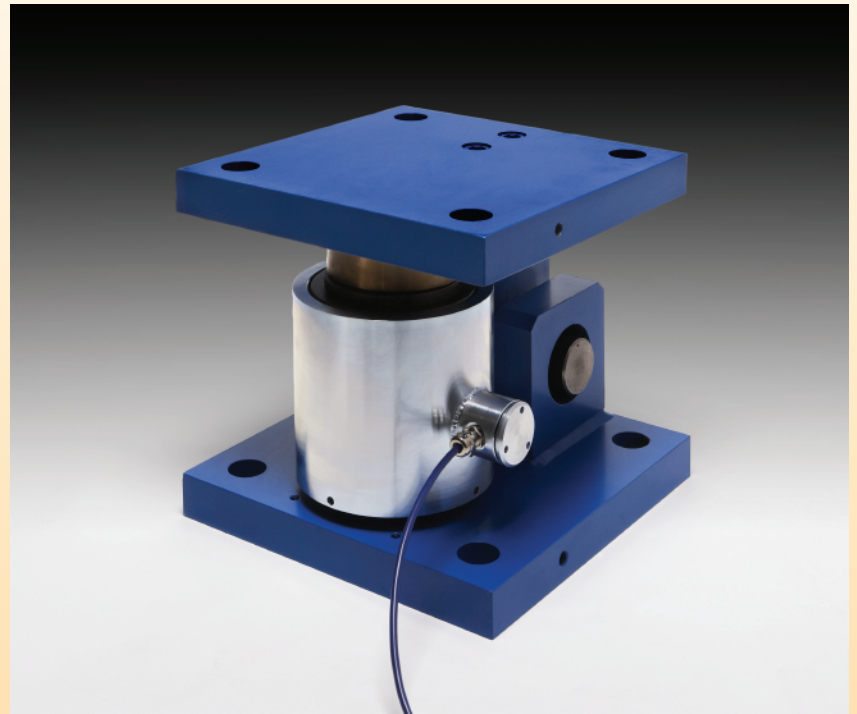




# Canister

range of Load Cells and assemblies



## Features

- 100,000kg to 600,000kg capacities.
- For Silo Weighing, Test machines and Bridge monitoring applications.
- Robust design for harsh industrial applications.
- Inbuilt strength - 150% maximum overload.
- Alloy tool steel load cell with sealing up to IP66.
- Designed and manufactured in the UK with a 5 year warrantee.

## Options

- ATEX for Zone 0, 1 and 2 hazardous areas.
- Armoured gland and cable.
- Digital version with RS485 ASCII, Modbus, CAN and CANopen outputs.
- High temperature up to 160°C.
- Range of industrial instrumentation and weight controllers.

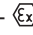
## Description

The Canister range of compression load cells are designed for very high capacity industrial applications. Uses include Silo weighing, Test Machines and Bridge monitoring applications. The Canister load cell is manufactured from alloy steel, with plated mild steel cover and plastic coated loading assembly.

# ENGINEERING SPECIFICATIONS

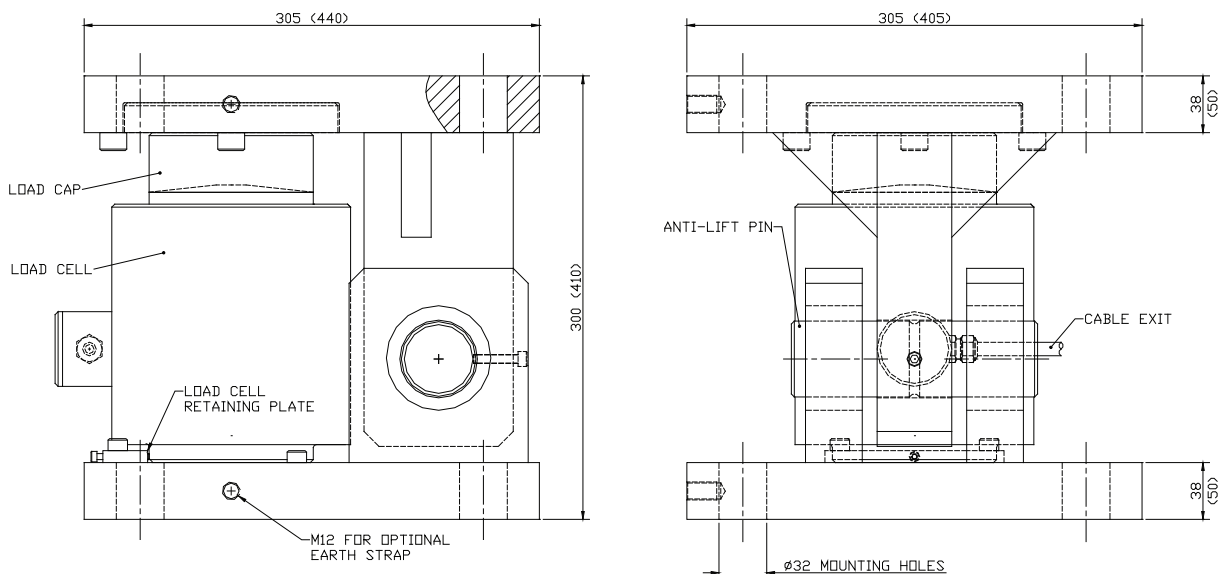
## CANISTER RANGE OF LOADCELL AND WEIGHING ASSEMBLIES

### Specifications

Full Scale Output:	1 - 2 mV/V Nominal	For ATEX Category 1 -  II 1G
Creep (in 20 minutes)	0.1% maximum	For ordering suffix the part number with 'X' i.e. AW552/10000X.
Non-Linearity:	0.1% maximum	(see certificate BAS99ATEX2067).
Hysteresis:	0.1% maximum	
Non-Repeatability:	0.05% max	
Compensated temperature range:	-10°C ... +40°C	
Operating temperature range:	-40°C ... +80°C (-35°C...60°C for ATEX)	
Load cell material:	Alloy steel EN24T	
Protection:	up to IP66	Cable: 10 Metres, 4 or (6) Core Screened.
Safe Overload:	150%	
Insulation Resistance:	2000 MΩ	Colour code:
Zero Balance:	1% F.S.	RED +ve excitation (WHITE + sense)
Supply Voltage:	5-12 V (DC or AC)	BLUE -ve excitation (BLACK - sense)
Max Voltage:	15V	GREEN +ve signal YELLOW -ve signal
Output Resistance:	350±5Ω	

### 100,000Kg - 600,000Kg

Capacity	Load cell with Weighing assembly	Load cell only	Weight of load cell and Assembly	Dummy load cell
100,000 kg	AW554/100000	AW552/100000	120kg	AW552/00001
150,000 kg	AW554/150000	AW552/150000		
200,000 kg	AW554/200000	AW552/200000		
250,000 kg	AW554/250000	AW554/250000		
350,000 kg	AW554/350000	AW554/350000		
400,000 kg	AW554/400000	AW552/400000	150kg	AW552/00002
500,000 kg	AW554/500000	AW552/500000		
600,000 kg	AW554/600000	AW552/600000		



**\*\* Note \*\*** Refer to installation documents before use.

Dimensions: 100,000Kg - 350,000kg (400,000kg to 600,000kg shown in brackets).

In the interest of continued product development, Applied Weighing reserves the right to alter product specifications without prior notice. **APPLIED WEIGHING INTERNATIONAL LIMITED, Caversham, Reading, England RG4 5AF** 'Applied Weighing' and the 'AW' logo are registered trademarks of Applied Weighing International Limited.

Supplied and Supported in Ireland by PJ Bonner | Telephone: 01 4505050 | Email: sales@pjbanner.com | Web: www.pjbanner.com