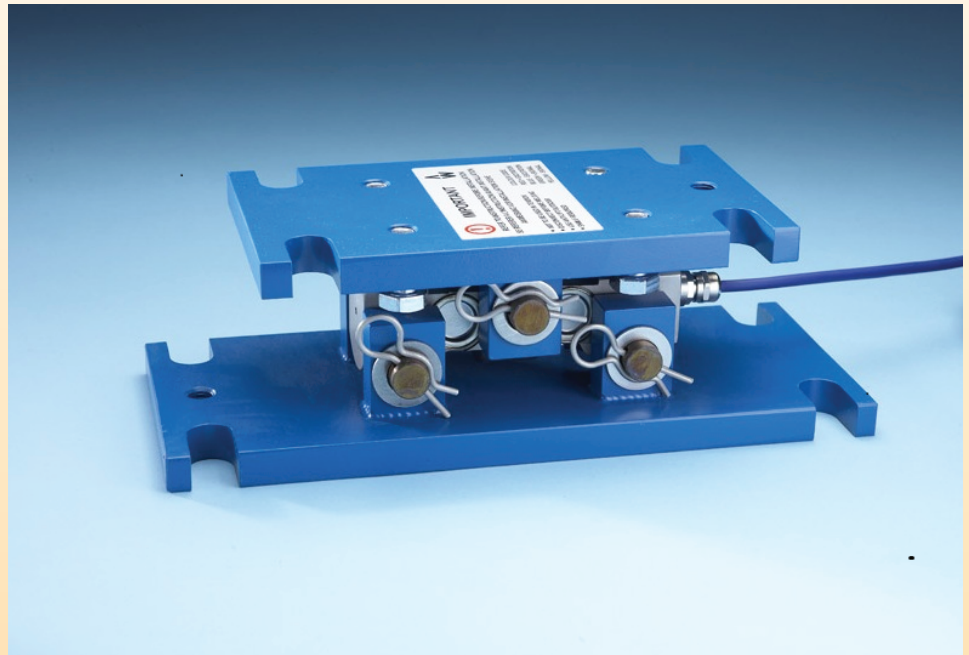




# Baby Safemount®

range of Weighing Assemblies.



## Features

- Interchangeable capacities from 1,000kg to 7,500kg.
- For industrial weighing of Hoppers, Tanks and Vessels.
- Robust design for harsh industrial applications.
- Inbuilt strength - 150% maximum overload.
- Fully welded stainless steel loadcell (sealing up to IP68).
- Durable nylon coated loading assembly.
- Designed and manufactured in the UK with a 5 year warrantee.

## Options

- ATEX for Zone 0, 1, 2, 20, 21 and 22 hazardous areas.
- Digital Version with RS485 ASCII, Modbus, CAN and CANopen outputs.
- High temperature up to 160°C.
- Range of industrial instrumentation and weight controllers.

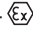
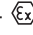
## Description

The Baby Safemount® range of load cells are designed for harsh industrial applications. Uses include on Hopper, Tank and Vessel weighing. The load cell is manufactured from stainless steel, fully welded and sealed to prevent moisture ingress.

# ENGINEERING SPECIFICATIONS

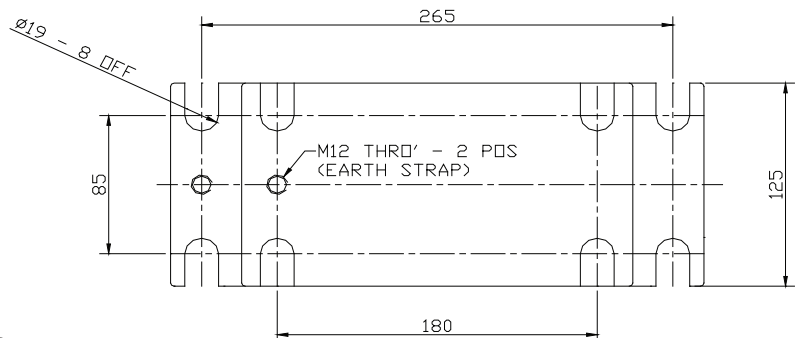
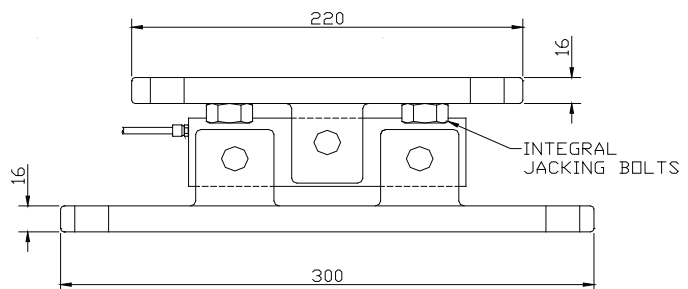
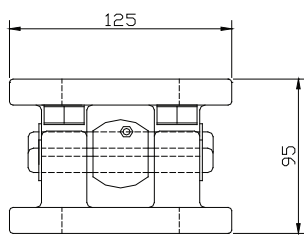
## BABY SAFEMOUNT LOAD CELL RANGE

### Specifications

Full Scale Output:	2.00 mV/V Nominal	For ATEX Category 1 -  II 1GD
Creep (in 20 minutes)	0.05% maximum	For ordering suffix the part number with 'X' i.e. AW304/0100X
Non-Linearity:	0.05% maximum	(see certificate BAS99ATEX2067)
Hysteresis:	0.05% maximum	
Non-Repeatability:	0.05% max	
Compensated temperature range:	-10°C ... +40°C	For ATEX Category 3 -  II 3GD
Operating temperature range:	-40°C ... +80°C (-35°C...60°C for ATEX)	For ordering suffix the part number with 'XD' i.e. AW304/0100XD
Load cell material:	stainless steel 17-4 PH	(see certificate Baseefa09ATEX0147X)
Protection:	up to IP68 (ATEX IP66)	
Safe Overload:	150%	
Insulation Resistance:	2000 MΩ	Cable: 10 Metres, 4 Core screened.
Zero Balance:	1% F.S.	
Supply Voltage:	5-12 V (DC or AC)	Colour code:
Max Voltage:	15v	RED +ve excitation    BLUE -ve excitation
Output Resistance:	700±5Ω	GREEN +ve signal    YELLOW -ve signal

### 1,000Kg - 7,500Kg

Capacity	stainless steel load cell & stainless steel assembly	stainless steel load cell & mild steel loading assembly	stainless steel load cell only	Dummy load cell & mild steel loading assembly
1,000 kg	AW305/01000	AW303/01000	AW304/01000	AW302/00011
2,000 kg	AW305/02000	AW303/02000	AW304/02000	
3,500 kg	AW305/03500	AW303/03500	AW304/03500	<b>Dummy mild steel load cell only</b>
5,000 kg	AW305/05000	AW303/05000	AW304/05000	AW900/00007
7,500 kg	AW305/07500	AW303/07500	AW304/07500	



Weight 11Kg

ALL DIMENSIONS IN MM

Refer to installation documents before use.

In the interest of continued product development, Applied Weighing reserves the right to alter product specifications without prior notice. **APPLIED WEIGHING INTERNATIONAL LIMITED, Caversham, Reading, England RG4 5AF** 'Applied Weighing' and the 'AW' logo are registered trademarks of Applied Weighing International Limited.

Supplied and Supported in Ireland by PJ Bonner | Telephone: 01 4505050 | Email: sales@pjbbonner.com | Web: www.pjbbonner.com